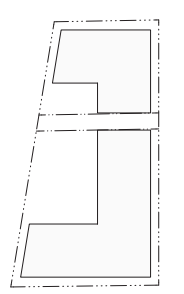


# **Attachment B2**

**Selected Drawings**



**Notes:**  
 1. THIS DOCUMENT IS THE PROPERTY OF SILVESTERREJLJUJ. IT IS TO BE USED ONLY FOR THE PROJECT AND SITE SPECIFICALLY IDENTIFIED IN THE TITLE. IT IS NOT TO BE REPRODUCED, COPIED, OR TRANSMITTED IN ANY FORM OR BY ANY MEANS, ELECTRONIC OR MECHANICAL, INCLUDING PHOTOCOPYING, RECORDING, OR BY ANY INFORMATION STORAGE AND RETRIEVAL SYSTEM, WITHOUT THE WRITTEN PERMISSION OF SILVESTERREJLJUJ. ANY UNAUTHORIZED USE OF THIS DOCUMENT IS STRICTLY PROHIBITED. SILVESTERREJLJUJ ACCEPTS NO LIABILITY FOR ANY DAMAGE OR LOSS OF PROFITS, BUSINESS, OR REVENUE, OR FOR ANY SPECIAL, INCIDENTAL, OR CONSEQUENTIAL DAMAGES, INCLUDING ATTORNEY'S FEES, ARISING OUT OF OR IN CONNECTION WITH THE USE OF THIS DOCUMENT. THIS DOCUMENT IS PROVIDED AS IS, WITHOUT WARRANTY OF ANY KIND, EXPRESS OR IMPLIED, INCLUDING BUT NOT LIMITED TO THE WARRANTIES OF MERCHANTABILITY, FITNESS FOR A PARTICULAR PURPOSE, AND NONINFRINGEMENT. SILVESTERREJLJUJ DOES NOT WARRANT THAT THE CONTENTS OF THIS DOCUMENT ARE ACCURATE, COMPLETE, OR UP-TO-DATE, OR THAT THE INFORMATION CONTAINED HEREIN WILL BE USEFUL TO YOU. SILVESTERREJLJUJ DOES NOT WARRANT THAT THE CONTENTS OF THIS DOCUMENT WILL NOT BE INFRINGED BY THIRD PARTIES. SILVESTERREJLJUJ DOES NOT WARRANT THAT THE CONTENTS OF THIS DOCUMENT WILL BE ACCURATE, COMPLETE, OR UP-TO-DATE, OR THAT THE INFORMATION CONTAINED HEREIN WILL BE USEFUL TO YOU. SILVESTERREJLJUJ DOES NOT WARRANT THAT THE CONTENTS OF THIS DOCUMENT WILL NOT BE INFRINGED BY THIRD PARTIES.

**DEVELOPMENT APPLICATION**

Rev: A  
 25/08/2023 For DA Approval  
 B  
 29/03/2024 For DA EPA



- NO REVISION DESCRIPTION**
1. EXTENT OF BASEMENT REDUCED (AS SHOWN)
  2. CARPARK & LOADING DOCK ENTRY COMBINED
  3. CARPARK & LOADING DOCK ENTRY COMBINED
  4. LOADING DOCK INCREASED INSIDE & RECONFIGURED
  5. EXTENT OF DEEP SOIL INCREASED
  6. EXTENT OF DEEP SOIL INCREASED
  7. UNITS REMOVED TO ALLOW FOR LOADING DOCK HEIGHT
  8. CORRIDOR EXTENDED WINDOW ADDED & LEFT RECONFIGURED TO INCREASE RAINWATER
  9. UPPER LEVEL MASSING SETBACK UNITS RECONFIGURED
  10. PRINCIPAL STORES ADDED TO CORRIDOR ENTRANCE
  11. ROOFTOP UNITS
  12. ROOFTOP UNITS
  13. PLANTERS ADDED TO ROOFTOP
  14. TREES FOR REINFORCEMENT WITH WINDSCREEN SCOPES
  15. HAWKING TREE LODGE REMOVED
  16. FACADE SCOPES REMOVED
  17. OSG & RAIN WATER TANK RELOCATED
  18. OSG & RAIN WATER TANK RELOCATED

Drawn by: Author  
 Checked by: P. J. M. J.  
 Project No: 180  
 Date: 29/03/2024  
 Project Name: 171 A DA 2001  
 Project Address: 171 A DA 2001  
 Project Location: 171 A DA 2001  
 Project Status: 171 A DA 2001

Client Name:  
 Erskineville Developments Pty Ltd  
 c/o Corcoran Property Co Pty Ltd

Project Name:  
 Upsy Erko

Project Address:  
 171 A DA 2001  
 Erskineville NSW 2043 Australia

Scale:  
 1:200  
 1:400  
 A1  
 A3

Drawn by Name:  
 Elevation  
 North

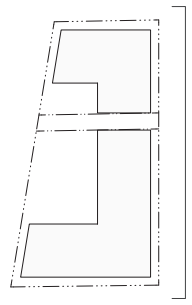
Drawing Number:  
 171 A DA 2001

Professional seals for the architect and drafter, including accreditation numbers and dates.

Notes:  
 1. THIS DOCUMENT IS THE PROPERTY OF SILVESTERREJLJUJ. IT IS TO BE USED ONLY FOR THE PROJECT AND SITE SPECIFICALLY IDENTIFIED IN THE TITLE. IT IS NOT TO BE REPRODUCED, COPIED, OR TRANSMITTED IN ANY FORM OR BY ANY MEANS, ELECTRONIC OR MECHANICAL, INCLUDING PHOTOCOPYING, RECORDING, OR BY ANY INFORMATION STORAGE AND RETRIEVAL SYSTEM, WITHOUT THE WRITTEN PERMISSION OF SILVESTERREJLJUJ.  
 2. THIS DOCUMENT IS NOT TO BE USED FOR ANY OTHER PROJECT OR SITE WITHOUT THE WRITTEN PERMISSION OF SILVESTERREJLJUJ.  
 3. SILVESTERREJLJUJ SHALL NOT BE RESPONSIBLE FOR ANY DAMAGE TO PERSONS OR PROPERTY ARISING FROM THE USE OF THIS DOCUMENT.  
 4. SILVESTERREJLJUJ SHALL NOT BE RESPONSIBLE FOR ANY DAMAGE TO PERSONS OR PROPERTY ARISING FROM THE USE OF THIS DOCUMENT.

DEVELOPMENT APPLICATION

Rev: 25/06/2023 For DA Approval  
 25/06/2024 For DA EPA



181

- NO REVISION DESCRIPTION
1. EXTENT OF BASEMENT REDUCED (AS SHOWN)
  2. CARPARK & LOADING DOCK ENTRY COMBINED
  3. CARPARK & LOADING DOCK ENTRY COMBINED
  4. LOADING DOCK IMPROVED INSIDE & RECONFIGURED
  5. EXTENT OF DEEP SOIL INCREASED
  6. UNITS REMOVED TO ALLOW FOR LOADING DOCK HEIGHT
  7. CORRIDOR EXTENDED WINDOW ADDED & LEFT RECONFIGURED
  8. RECONFIGURED TO INCREASE RAINWATER
  9. UPPER LEVEL MASSING SETBACK, UNITS RECONFIGURED
  10. ADDITION OF WALKWAY TO COMMUNAL CORRIDOR
  11. RECONFIGURED TO INCREASE RAINWATER
  12. RECONFIGURED TO INCREASE RAINWATER
  13. RECONFIGURED TO INCREASE RAINWATER
  14. RECONFIGURED TO INCREASE RAINWATER
  15. RECONFIGURED TO INCREASE RAINWATER
  16. RECONFIGURED TO INCREASE RAINWATER
  17. RECONFIGURED TO INCREASE RAINWATER
  18. RECONFIGURED TO INCREASE RAINWATER
  19. RECONFIGURED TO INCREASE RAINWATER
  20. RECONFIGURED TO INCREASE RAINWATER
  21. RECONFIGURED TO INCREASE RAINWATER
  22. RECONFIGURED TO INCREASE RAINWATER
  23. RECONFIGURED TO INCREASE RAINWATER

Client Name: Erskineville Developments Pty Ltd  
 c/o Coronation Property Co Pty Ltd  
 Project Address: 171 A DA 2002  
 171 A DA 2002  
 171 A DA 2002  
 171 A DA 2002

Client Name: Erskineville Developments Pty Ltd  
 c/o Coronation Property Co Pty Ltd

Project Address: 171 A DA 2002  
 171 A DA 2002  
 171 A DA 2002

Scale: 1:200  
 1:200  
 1:200

Sheet No: A1  
 A1  
 A1

Drawing Name: Elevation  
 East

Drawing Number: 171 A DA 2002

